



OWNERS MANUAL



Please note that this is a general manual. The type of motorcycle that you own may differ from the pictures shown in this manual.



Scan the QR code for quick start guide

Contents

Operating Instructions-----	3
Safety warning -----	3
Compliance with the laws and directives-----	4
Assembling guide -----	4
The position of the VIN-----	5
Key switch-----	5
Charger (optional)-----	5
Alarm (optional)-----	5
Emergency turn off stop switch-----	5
Tire and Tire gauge -----	6
Assembly Instructions -----	11
CAUTION: READ BEFORE USING -----	14
Transporting your vehicle -----	14
Delivery -----	15
Preparation Before Start-up-----	15
Inspection before riding-----	15
Idling inspection-----	15
Front brake inspection -----	15
Rear brake inspection -----	15
Battery check (if available)-----	16
Tool bag inspection-----	16
Protective riding gear-----	16
Training -----	17
Starting-----	17
Riding-----	17
Parking-----	18
Cleaning -----	18
Maintenance -----	18
Storage-----	19
Trouble Shooting -----	19

Operating Instructions

IMPORTANT! Please read this owner's manual carefully before using this product!

It is crucial for the driver's safety and to keep the vehicle in proper working order!

If the rider is inexperienced, please DO NOT ride without adult supervision!

This product is recommended for riders 10 years old or over.

Do not let others ride the vehicle if they do not know how to operate it.

Please observe all local laws and regulations.

Safety warning

1. This vehicle is not a toy.
2. Rider's under 16 years must operate this product under adult's supervision
3. It is very important that children are trained before riding. They must be fully competent in operating the unit so that no accidents will occur.
4. The user must read the Owner's Manual carefully and understand the content of the manual.
5. Incorrect operation of this off road two-wheel vehicle can result serious injury or even death.
6. Obey the age limit warning. (See warning sticker on the bike)
7. This product is not intended for ON-ROAD use. Please dismount and walk it when crossing roads.
8. Only one person should ride the unit at a time.
9. Never attempt to operate this vehicle while under the influence of alcohol or drugs. This could lead to injury or death.
10. Please ride at a controlled speed, do not drive at excessive speeds.
11. Be sure the vehicle is in a good working condition before use.
12. Do not modify the vehicle or change any parts. This is unsafe and voids any warranty.
13. The throttle has been set and should NOT be adjusted. Failure to do so, could result in injury or death.
14. Always wear safety gear when riding. This consists of a safety helmet, goggles or eye protection, gloves, protective clothing and footwear.
15. It may be necessary to get training on how to properly operate the vehicle.
16. Make yourself aware of local laws and regulations for off road riding in your area.
17. The engine and exhaust system become very hot when riding. Be careful of these parts so that you don't burn yourself.
18. Although the vehicle is designed with safety in mind, accidents can still happen if you are not careful.

Please read and understand the warning labels on the vehicle.

1. The warning label includes important safety information.
2. User must understand the content of labels completely, and carry them out.
3. Make sure all the labels are clean and visible on the vehicle.
4. If the labels are damaged or have worn off, please ask your dealers for new warning labels.

Compliance with the laws and directives

2006/42/EC	MACHINERY DIRECTIVE
2004/108/EC	EMC DIRECTIVE
97/68/EC	ENGINE POLLUTANT DIRECTIVE

Assembling guide

1. Place the packing box on flat ground, then open it (use a scissors or box cutter).
2. Use #10 open-end wrench and #6 allen wrench to remove the packing metal (on models packed with an iron cage, this step is not applicable).

1st step: Install the rear shock absorbers, tighten the nuts on both sides to 18.5-foot pounds of torque.

2nd step: Install the front tires (make sure the tread pattern and air valve are to the outside), and tighten the nuts to 26 – 32-foot pounds of torque

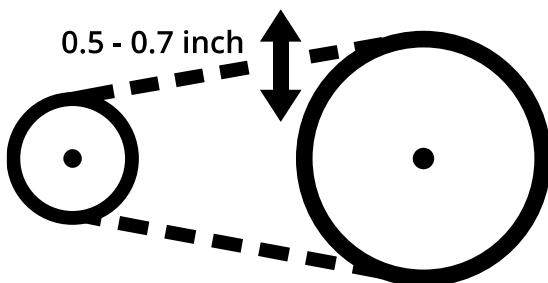
3rd step: Install the handlebar (adjust to desired angles), and tighten nuts between 11–18-foot pounds of torque.

4th step: Connect the battery cables. When you connect battery cables, the electric lock is in the "OFF" position. Connect the positive terminal first, then the negative terminal. Disassembly is opposite.

If you do not understand the instructions, please contact your local retailer and get professional help for assembly.

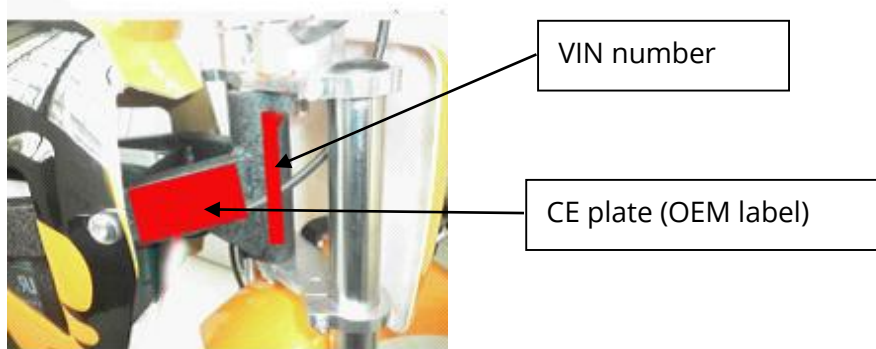
Chain Adjustment (This step should be checked regularly to ensure safety):

Adjust the Chain: Using your index finger, press lightly on the middle of the chain between the front and rear sprockets. You should have about 0.5 in – 0.7 inches of free play. If it is not in this range, please adjust the chain. (Please note: The left-side and right-side chain adjusters should be adjusted at the same time to ensure the adjustment is the same on each side). To adjust the chain, loosen the axel bolts. Then loosen or tighten the adjuster nuts to get the chain at the proper tension. Finally, tighten the chain adjuster nuts, then the axel bolts.



The position of the VIN

The VIN is on the right side of the front frame.



Key switch

This model doesn't have key switch. The safety kill switch can be used as a key. When it is not contacted, the bike cannot start.

Charger (optional)

1. The input voltage is 220V or 110V (depending on your market), and the output voltage is 12V.
2. When the vehicle is charging, the indicator light will be red. When the vehicle is fully charged, the indicator light turns to green.

Alarm (optional)

1. The input voltage is 12V.
Anti-theft function: Press the "lock" key, this will activate the alarm.
2. Keyless function: It's not necessary to have the key on, just press the "start" button twice continuously, and you can operate the vehicle.

Emergency turn off stop switch

It's will be on the left side, either on the rear frame, or on the left handlebar. Pull or press down the switch and the engine will stop.

The emergency tether can be fastened on the driver's wrist. If there is an accident and the rider falls off, the tether will pull out and stop the engine.

Tire and Tire gauge

Tire: Proper tire pressure provides maximum stability and proper tire wear.

Check the tire pressure on a regular basis and inflate when needed.

To find the tire size and standard pressure, please check parameter list and warning label on the vehicle. To find the "Load-bearing" and "speed grade", please check the tire surface.

1. Check tire pressure and condition before each ride. If the rim is bend or there are any other damaged areas on the rim, please replace it. **(Seek assistance from qualified technician or local retailer for replacement.)**
2. Improper tire pressure will result in hazards. Too much air pressure can cause the tire to go flat. Not enough air pressure can cause tire to deform and overheat, and resulting in less grip and a higher risk of accidents.
3. When the tire-tread wearing is over 2mm, please replace the tire. **(Seek assistance from qualified technician or local retailer for replacement.)**

Tire gauge (optional): The manufacturer will provide a gauge to measure tire pressure.

The tire gauge is put on the key ring of the key switch for the users' convenience.

Checking the pressure: Unscrew valve cap, place the gauge onto the nipple and hold down until you get a reading. This number will be the tire pressure. If the number is too low, add air with a tire pump. If the number is too high, hold the gauge onto the tire valve until you get to the desired number. Replace the valve cap and screw it on after measuring.

The position of spare parts, parameter, Electrical diagram, age warning and other warning labels and plates.

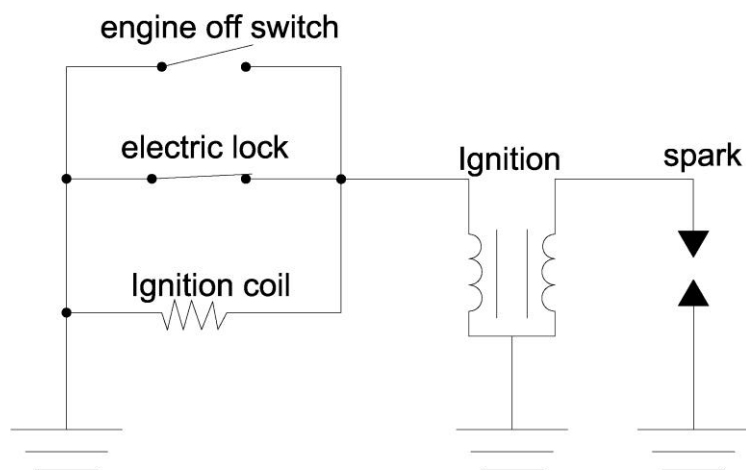


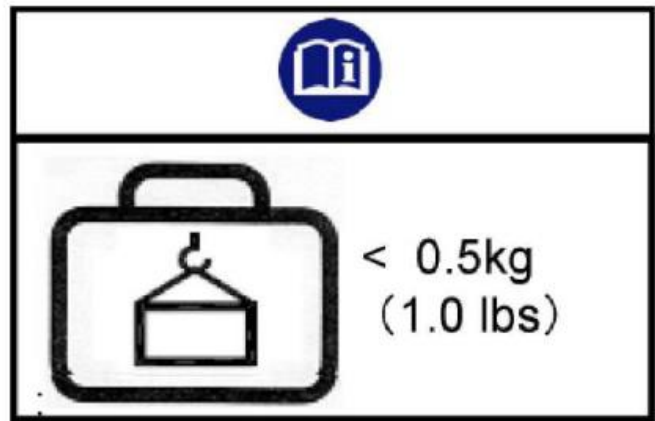


PRODUCT NAME	DIRT BIKE	PRODUCT MODEL	KXD505
LENGTH X WIDTH X HEIGHT (mm)	1020×610×650	ENGINE MODEL	1E44F-6
AXLE BASE (mm)	710	BORE×STROKES	44.02×33.20
WHEEL BASE (mm)	/	DISPLACEMENT (ml)	50.53
MIN GROUND CLEARANCE (mm)	105	COMPRESSION RATE	8:1
TURNING CIRCLE DIAMETER (mm)	2000	UNLOADING AND ROTATE SPEED(r/min)	2800±150
DRY WEIGHT (kg)	18.5	RATED POWER HP (r/min)	2.52/7000
THE WEIGHT OF FULL FURNISHMENT (Kg)	22	MAXIMUM TORQUE N.m (r/min)	2.4/5500
RATED LOAD QUALITY (kg)	80	CARBURETOR TYPE	H117A FLOAT (PLUNGER)
MAXIMUM SPEED (Km/h)	34	CLUTH TYPE	AUTOMATIC CENTRIFUGAL
OIL TANK CAPACITY (L)	0.8	SPARK PLUG TYPE	BM6A
FRONT/REAR SHOCK ABSORBER TYPE	F:/ R:/	MUFFLER TYPE	IMPEDANCE COMPOUND MUFFLER
FRONT/REAR BRAKE TYPE	F:/ R:DISC BRAKE	STARTING MODE	PULL START
FRONT/REAR BRAKE OPERATION MODE	F:/ R:BY FOOT	IGNITION MODE	NONE-TOUCH MAGNETIC CONTROL
FRONT/REAR TIRE SPECIFICATION	F:4.10-6 R:13×5.0-6	DRIVE MODE	CHAIN DRIVE
FRONT/REAR TIRE PRESSURE	241Kpa	LUBRICATION MODE	PETROL MIXED

			LUBRICATE
FRONT/REAR RIM TYPE	STEEL WHEEL	COOLING MODE	AIR-COOLED
HEADLIGHT SPECIFICATION	/	FUEL BRAND	≥90#
PRIMARY REDUCTION RATIO	3.20	MIXTURE RATIO OF FUEL & LUBRICANT OIL	1:25
FINAL REDUCTION RATIO	11.33	LWA dB(A)	78
DRIVE RATIO	36.26	VIBRATION(m/s ²)	1.0

CIRCUIT DIAGRAM





Assembly Instructions

1. Open the box and remove all contents



2. Install the handlebars.

The included tools will be used in this step



3. front wheel installation

The included tools will be used in this step



4. front fender installation

The included tools will be used in this step



5. Number plate installation

The included tools will be used in this step



6. Apply the decals – see image below for placement



7. Mix the gas/oil at a ratio of 20-25/1

Use regular 2 stroke oil and #91 octane fuel. Mix 1 gallon of fuel to 5.5 oz of 2 stroke oil.



8. Now it's ready to ride!



ITEM	Qty	PHOTO	INSTALLATION
Bolt M10 x 16	2		Handlebar
Screw M6 x 16	2		Front Fender
nut M6	2		
Bolt M6 x 16	1		Number plate
Tool box collect			
			

CAUTION: READ BEFORE USING

Do not allow anyone who does not understand this instruction manual to operate the vehicle.

Use only unleaded gasoline mixed with two-cycle oil at a ratio of 25:1. Do not use old gas and do not use any ratio other than 25:1 otherwise the unit will not perform well and may damage the engine.

Racing should use mixture of the unleaded gasoline and the two-cycle engine oil. The volume ratio is Do not use 4 cycle engine oil. It will foul the spark plug, may seize the engine and may clog the exhaust.

Do not run the engine in a room or poorly ventilated area. (The exhaust gases are odorless carbon monoxide and are very hazardous.)

Do not put your hand or foot near any moving or rotating part of engine.

Do not store, spill or use any gasoline near a fire, stove, oven, boiler or anything else which uses a pilot light or spark. This could result in an explosion.

Smoking is strictly prohibited while refilling the fuel tank.

While the engine is running or while it is hot, do not remove the lid of the fuel tank or refill the fuel. (Before refilling with fuel, stop the engine and let it cool down for 2 minutes or more.)

If you smell gas, do not run the engine, Check the vehicle for any gas leaks.

Do not adjust the RPM setting of the engine.

Do not check the spark while the spark plug is removed.

Do not run the engine with the muffler or air cleaner cover removed.

To avoid burns do not touch any hot components such as the muffle or engine parts.

When the engine is running, do not touch the spark plug cap or spark plug cord. It may cause an electric shock which could harm your body.)

ALWAYS WEAR A HELMET AND SAFETY GEAR.

ALWAYS CHECK THAT THE BRAKE COMPONENTS ARE FUNCTIONING PROPERLY BEFORE RIDING.

DO NOT RIDE IN RAIN, SNOW, SLIPPERY SURFACES, OR ON UNSTABLE GRAVEL OR SAND.

PREGNANT PERSONS SHOULD NOT USE THIS PRODUCT.

NEVER USE ALCOHOL OR DRUGS BEFORE OR WHILE OPERATING.

LET THE BIKE IDLE FOR 3-5 MINUTES BEFORE RIDING AND WHEN SHUTTING IT OFF

This bike is not intended for use on pedestrian crossings, streets, highways and freeways.

Please check with your local department of motor vehicles for regulations in your country/ state.

Transporting your vehicle

This is a process of transport the well-packed vehicle.

1. Ensure the packaging will protects the vehicle during transit.
2. Ensure the vehicle is well fixed on the trailer or forklift.
3. Handle with care.

Delivery

1. Ensure the vehicle is placed right side up. Do not turn it upside down or lay it on its side.
2. Ensure the vehicle is well fastened on the trailer or forklift.
3. Handle the vehicle with care.

Preparation Before Start-up

Inspection before riding

1. Inspect equipment

Check the tightness of all bolts & nuts, brakes, engine etc. Tighten if needed

2. Refuel

Use a mixture of gasoline and two-stroke engine oil. The ratio is 25:1. Use a clean container and shake the mixture for at least 30 seconds. Do not use any gas/oil mixture that is older than 1 month.

3. Check and clean the air filter

The air filter must be cleaned often. A dirty air filter will lower the output of the engine. To clean the air filter, remove it, wash it in gasoline, let it dry. Lightly coat the filter in motor oil and squeeze out the excess oil. Reinstall the filter on the vehicle

Idling inspection

1. Place the vehicle on a flat, clean surface. Inspect all of the mechanical parts, to make sure they move correctly and without interference.
2. Check the front and rear the shocks, make sure they are not bent or leaking.
3. Check the front and rear suspension and tighten if necessary.
5. Repair and replace worn parts as needed.
6. Contact the dealer if you need further assistance.

Front brake inspection

Check the front hand brake. As you pull in the lever, the resistance should be firm.

1. Front brake handle is mounted on the right side of the handlebar.
2. The correct brake adjustment should have 20-30mm of play in the lever before the brake engages.
3. Check that the tire is rotating properly after releasing the brake lever
4. Contact the dealer if you need brake maintenance.
5. The front brake lever is also a parking brake.

Rear brake inspection

1. Check the rear hand brake. As you pull in the lever, the resistance should be firm.
2. The rear brake is mounted on the left side of the handlebar, or on the right side near the foot peg.

3. The correct brake adjustment should have 20-30mm of play in the lever before the brake engages. The foot pedal should have 20-30mm of play (downward movement) before the brake engages.
4. Put the brake lever or foot brake lever back into place quickly and check if the tire rotation is good when the force is removed.
5. Contact the dealer if you need brake maintenance.
6. Inspect the brake shoe regularly, and replace when it is worn.
7. Brake fluid is very hazardous so take special precautions if you open the brake master cylinder. Always wear gloves and protective clothing if and when working with brake fluid, as the fluid will damage most surfaces it comes in contact with.
8. The rear brake lever is also a parking brake.

Battery check (if available)

The battery is maintenance free.

1. Check whether battery joint is tight. If there is some part broken, please change it.
2. When you need to replace the battery, take it to a recycling center, do not put it in the trash.
3. Do not charge the battery until it is out of power.
4. When the vehicle is parked for extended periods of inactivity, check it every 3 weeks. Charge it when it is below 12V.
5. When charging, using or handling the battery, ALWAYS place it right side up.

Tool bag inspection

Keep the tool bag with you on every ride. The tool bag is equipped with tools that can come in handy.

Protective riding gear

Protective riding gear is very important and must be worn. It will ensure your safety while riding and help you avoid injuries. Also see the warning labels placed on the vehicle for additional precautions.

Protective clothing shown below:



Training

- Unexperienced persons may not understand the information in this part. They may require learning from a professional or a training institution.
- During the training period, keep the throttle on the slowest position and DO NOT increase it until the rider shows confidence. Then it can be increased in small intervals.
- After the training period, maintain the vehicle according to maintenance schedule.
- Training is necessary. Improper operation can result in damage to the vehicle, as well as serious injuries and even death.
- If the driver does not have any safety awareness or driving experiences, only operate it under the supervision of adults.

Starting

Following the steps below to start the engine:

- Remove the bike from the cardboard carton, unpack it and park it on a flat surface.
- Turn the key switch to the "ON" position.
- Fill the fuel tank. (Gas-oil mix 25:1). Failure to use the proper oil mix ratio will result in engine damage for which the owner will be responsible.
- If the engine doesn't start at first, open the choke valve and try again. Close the choke, when the engine starts to run.
- The bike is unsuitable for public roads and does not comply with on-road safety standards. Unsafe and careless use of this bike can result in serious injuries. The driver can minimize the potential risks by wearing the recommended safety equipment. The driver must wear safety helmet, goggles, gloves, elbow pads, knee pads and firm footwear. The bike can't be used on wet, icy or oily surfaces. Avoid uneven surfaces and obstacles, Drive with two hands on the handlebars at all times.

Riding

Before driving, please review these safety tips.

- Make sure the brakes are working correctly.
- Driving with one hand is dangerous and forbidden.
- Turn the throttle on slowly. Never turn it abruptly.
- Release the throttle and use the brakes to slow down.
- Make sure to use both the front and rear brake at the same time for efficient stopping. Never grab the brakes too hard, this can reduce the life of the brakes.
- Do not make dangerous movements while driving.

Parking

- Let the engine to idle for 3-5 minutes before turning off.
- Activate the kill switch to stop the engine.
- Turn the key to the "OFF" position when the vehicle stops, remove the key.
- The parking brake function is recommended when parking the bike.

Cleaning

After each ride, the rider should clean the vehicle. Place the vehicle on a flat surface to clean it. Follow the instructions below:

- The use of a high-pressure washer will harm the vehicle and is NOT advised.
- Avoid getting water on the key switch, cables, and battery.
- Wash the vehicle with clean water and mild soap.
- Do not turn on the key switch immediately after cleaning. Let the vehicle dry.
- The chain should be lubed with chain grease.

Maintenance

An unexperienced person may not understand the information of this maintenance section. For more specific details, please contact your local retailer.

Necessary maintenance is VERY important to keep the vehicle in good operating condition. Please maintain the vehicle according to the Maintenance Chart.

Engine Maintenance: After each ride, close the petcock to the carburetor. This is very important. Failure to do so may cause the vehicle not starting and requiring a cleaning or full servicing of the carburetor.

Check before each riding session

- (1). Check all screws and nuts to assure they are tight.
- (2). Check fuel leakage or air leakage.

Check after 20 hours of use

- (1). Clean the air filter
- (2). Clean the fuel strainer.

Check after 50 hours of use

- (1). Refasten the nuts of the cylinder
- (2). Clean the accumulated carbon both in the combustion chamber and in the exhaust of the cylinder.
- (3). Clean the accumulated carbon in spark plug, adjust the clearance to 0.5-0.7mm

Maintenance Chart

(Strictly follow this maintenance chart to ensure long life of your vehicle)

I: Inspection, Maintenance or lubricant replacement C: Cleaning L: Add lubricant

	First week	30days after driving	Each year
Fuel System	I		
Throttle		I	
Air filter		C	
Spark plug		I	
Carburetor	I	I&C	
Chain	I&L	I&L	
Brake pads			
Brake system	I	I	I
Nuts and bolts	I	I	
Tires	I	I	I
Steering system			I
suspension system		I	I
Battery (if available)		I	

Storage

If you must store the vehicle for a period of time, make sure it is in good operating condition and follow the procedures below:

- Remove the fuel in the tank and the carburetor, close the choke, pull the starter 3-5 times.
- Remove the spark plug, add engine oil to the spark plug hole into the cylinder, then pull the starter 2-3 times to move the piston to the top dead center. Install the spark plug.
- Clean the vehicle. The use a soft cloth with engine oil to clean the surface of the engine, apply wax to the frame and the engine, let it completely dry before using again.
- Check the weight of vehicle from the parameter list.
- Turn the key switch to "OFF"
- Clean the chain, and then lubricate it.
- Lubricate the cables.
- Place the vehicle in a cool, well-ventilated place to avoid dampness and sun exposure.

Trouble Shooting

1. Failure to start

- (1). Gasoline mixed with water, please replace it.
- (2). The spark plug has accumulated carbon or has been broken through. Clean or replace.
- (3). Poor contact of the high-voltage wire with the spark plug.

2. The engine starts, but does not run to normal speed.

- (1). The choke is on, partially or full. Turn off.
- (2). The ratio of the engine oil and the gasoline is not correct. Re-mix to correct ratio.
- (3). Could be water in the gasoline. Replace with fresh gas.

3. The gasoline engine can run, but has not enough power.

- (1). Maybe the air filter is blocked.
- (2). The exhaust and the muffler may be clogged by accumulated carbon.
- (3). The piston, the piston rings and cylinder are worn out.
- (4). The fuel strainer may be blocked.

4. The gasoline engine stops suddenly when running.

- (1). Ran out of the gasoline.
- (2). The battery cables are off.
- (3). The spark plug has accumulated carbon or has been broken through.
- (4). The fuel strainer is blocked.
- (5). Could be water in the gasoline.
- (6). The air hole of the tank lid is blocked.

5. Can't shut off the engine

The kill switch is not working correctly.

6. Have more questions?

Visit support.syxmoto.com