

MT-2 ASSEMBLY GUIDE

1. Open the box and take everything out.



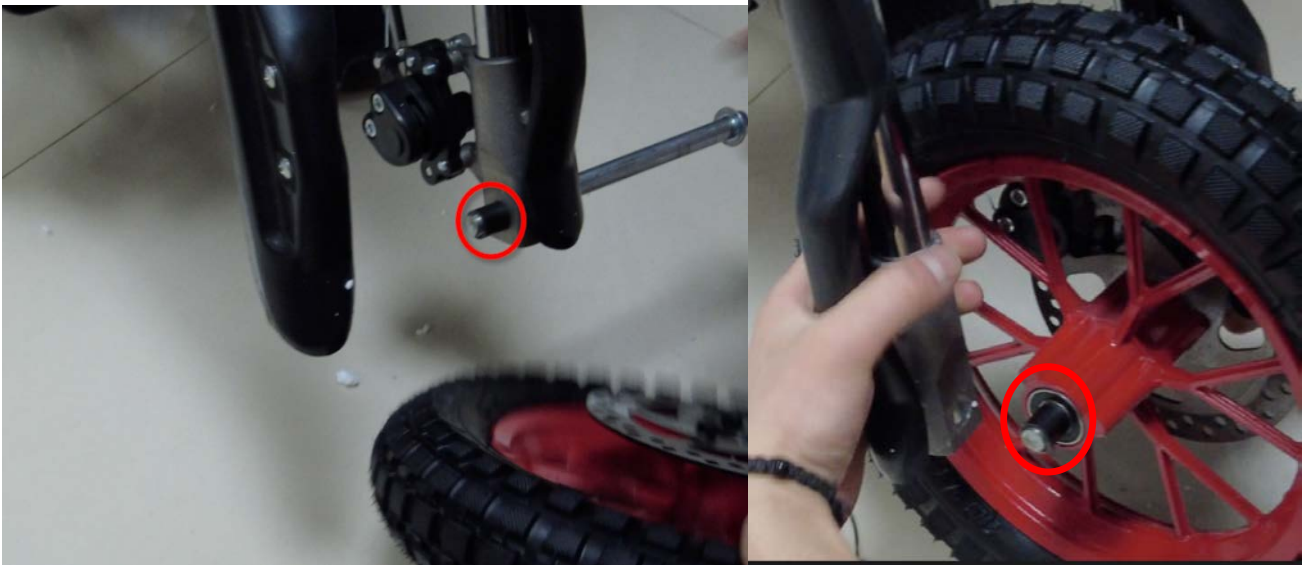
2. Install the rear shock absorber, and tight the bolt.



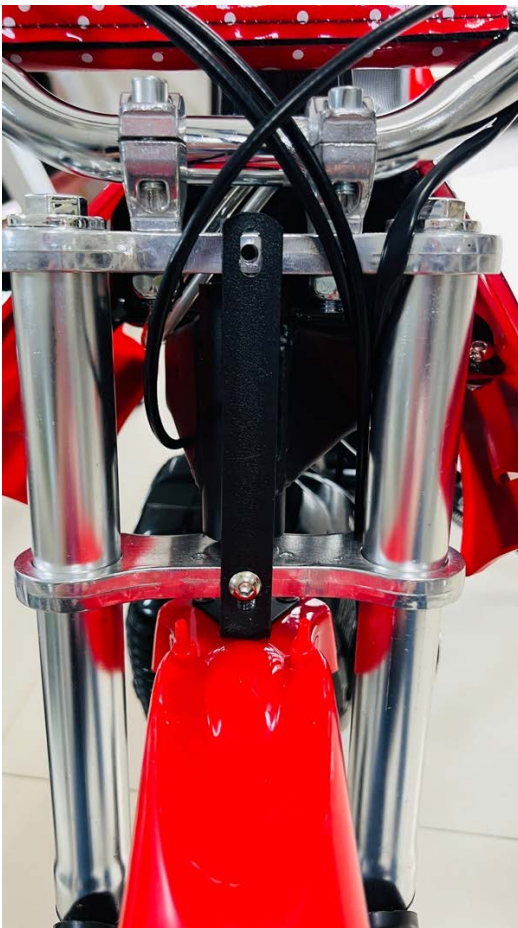
3. Install the handlebar, tight the bolts and risers.



4. Install the front tire. Do not forget the two spacers in between the rim and forks.



5. Install the front fender and number plate.



6. Secure the plastic cover with the included screws, and tight the bolts.

two screws on the front side panels connected to the frame



two screws on the front side panels connected to the fuel tank



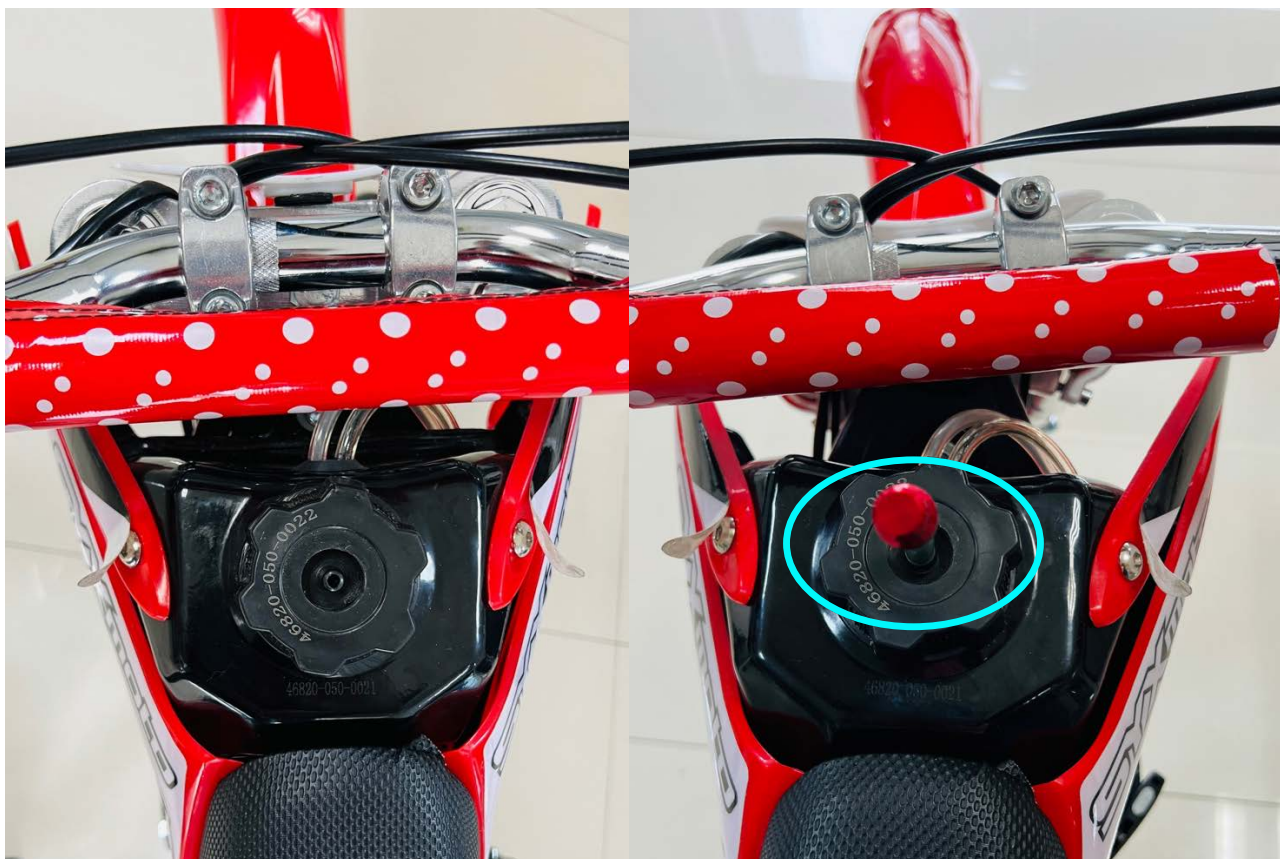
Two screws on the rear side panel connected to the frame



two screws on the rear panel



7. Install the anti-leak hose.



8. Adjust and tight the throttle and brake, make sure that the throttle limit screw does not interfere with the brake.

2 screws on the right and left handle bars



4 screws on the kill switch



Scan the QR code to watch the assembly tutorial

www.facebook.com/syxmotousa
www.youtube.com/@SYXMOTO

